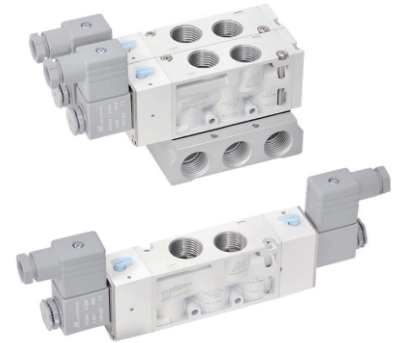


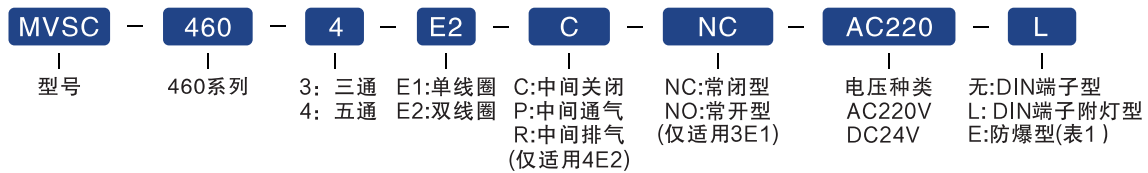
MVSC460 系列电磁阀

● 产品特性

- 1、低功率线圈，环保节能；
- 2、水滴型手动转钮，方便测试；
- 3、U-packing轴环设计，密封性能优良；
- 4、使用寿命高达5000万次；
- 5、无油润滑设计。



● 订购代码



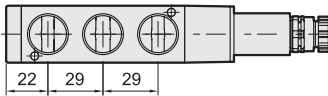
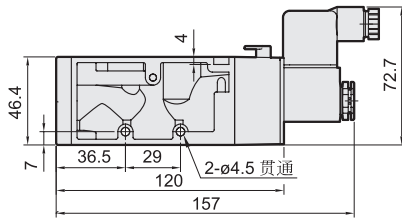
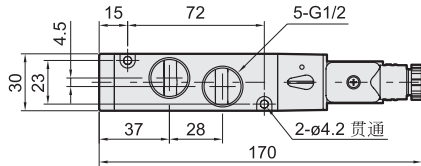
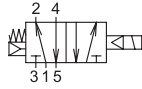
● 技术参数

型号	3E1	3E2	4E1	4E2	4E2 C.P.R
配管口径尺寸	G1/2				
方口数	3口		5口		
位置数	2位置				3位置
使用流体	空气				
使用压力范围	0.2~0.8 MPa				0.3~0.8 MPa
耐压力	1 MPa				
有效断面积	60 mm ²		50 mm ²		30mm ²
应答时间	50ms				
周围温度	- 5~+50° C (不冻结)				
定格电压	AC110V, 220V, 24V (50/60)Hz, DC24V, 12V				
电力消耗	AC=4.8/4.4VA, 6/4.9VA, 6.7/5.4VA, DC=2W, 2.5W				
电压容许范围	± 10%				
绝缘等级	F级				
重量	325 g	455g	339g	464g	525 g

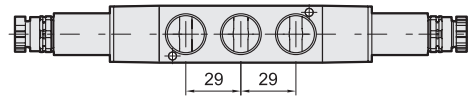
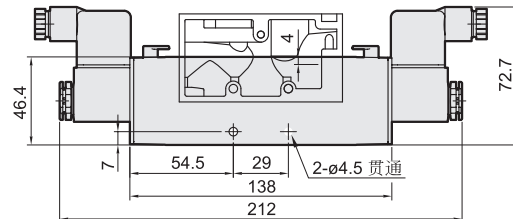
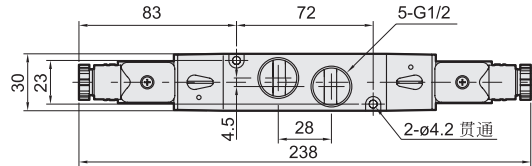
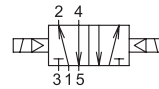
MVSC460 系列电磁阀

• 外形尺寸

MVSC-460-4E1



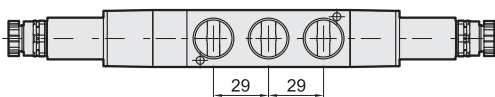
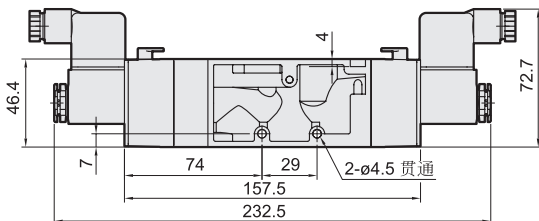
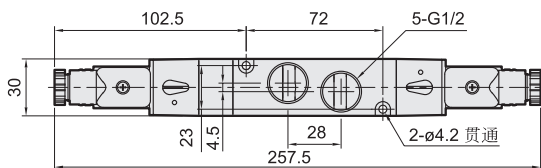
MVSC-460-4E2



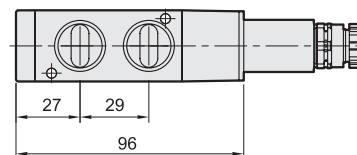
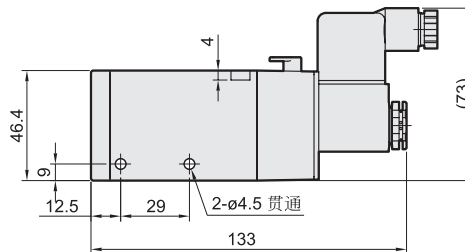
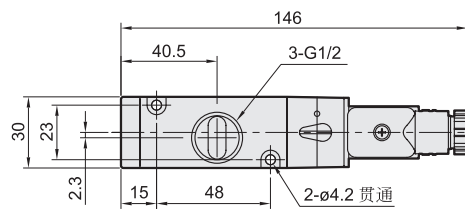
MVSC-460-4E2C.PR



MVSC-460-4E2C MVSC-460-4E2P MVSC-460-4E2R



MVSC-460-3E1-NC/NO

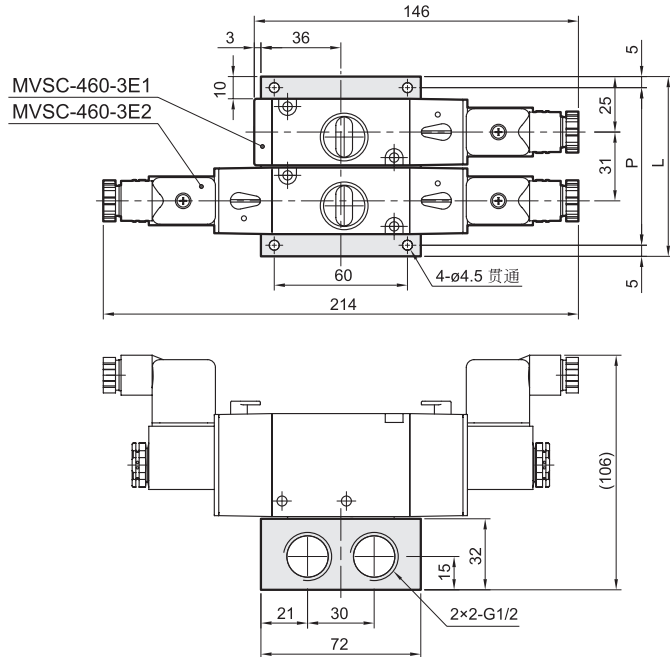


MVSC460 系列电磁阀

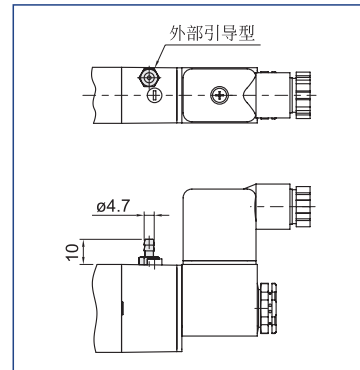
• 阀板外形尺寸

MVSC-460-3B*

3 方口直配管型用



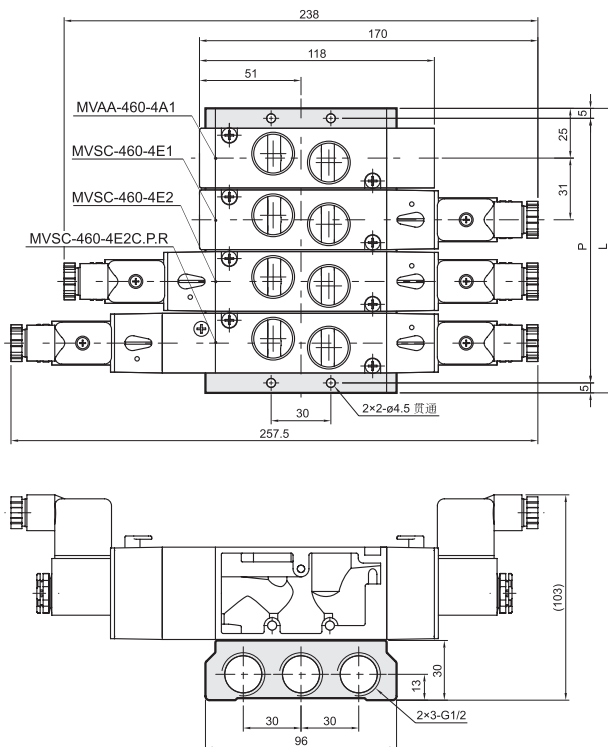
LP



连座数	P	L
2	71	81
3	102	112
4	133	143
5	164	174
6	195	205
7	226	236
8	257	267
9	288	298
10	319	329

MVSC-460-5B*

5 方口直配管型用



连座数	P	L
2	71	81
3	102	112
4	133	143
5	164	174
6	195	205
7	226	236
8	257	267
9	288	298
10	319	329